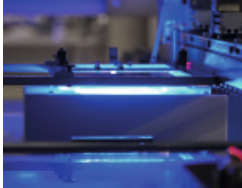


fast, automated  
fault detection

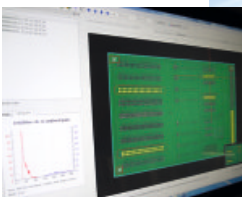


## POWERVISION AOI in THT Processes

multispectral  
analysis unit



early series fault  
detection reduces  
production costs



## short cycle times cost-effective

- AOI system for component placement inspection and solder joint inspection specifically in THT processes
- integrated in a selective soldering system or as a separate module with flexible configuration
- orthogonal camera and multi-spectral lighting concept guarantee fast analysis and low false call rates
- RGB area scan camera
- programming: simple and fast
- database-supported software architecture = completely traced processes
- user-friendly verify software with individually configurable reference image database
- integrated statistic tools ensure early process optimization



**SEHO Systems GmbH**

DE 97892 Kreuzwertheim | [www.seho.de](http://www.seho.de)

**SEHO North America, Inc.**

Erlanger, KY, USA | [www.sehona.com](http://www.sehona.com)

**SEHO Systems Korea Ltd.**

Gyeonggi-do, Korea | [www.sehokr.com](http://www.sehokr.com)

**SEHO Systems China Ltd.**

Shanghai, China | [www.sehosystems.cn](http://www.sehosystems.cn)

